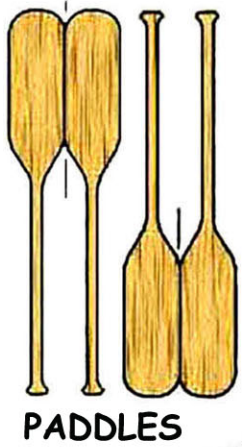
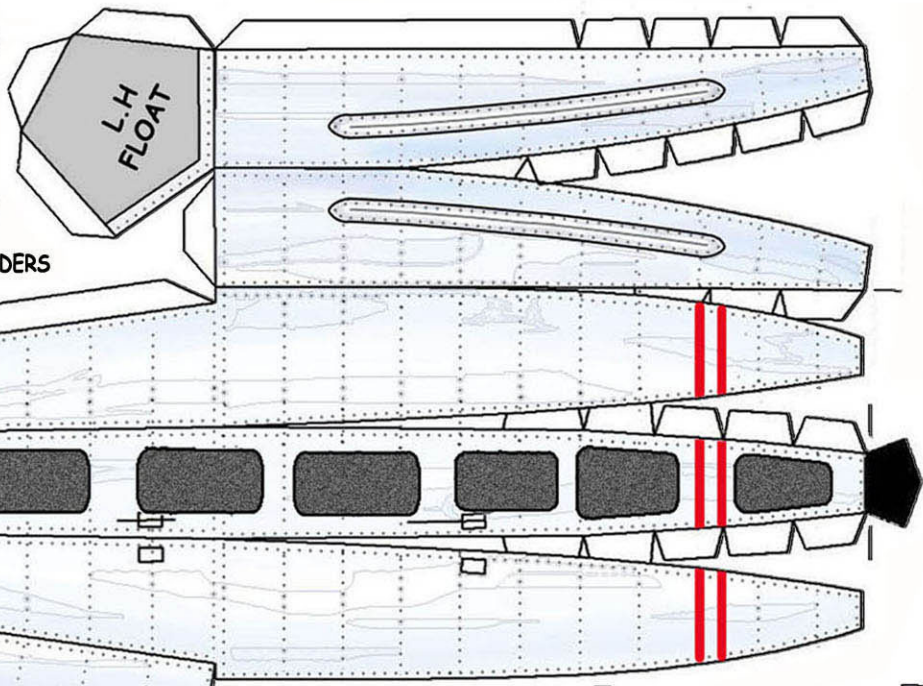
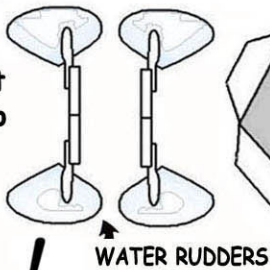
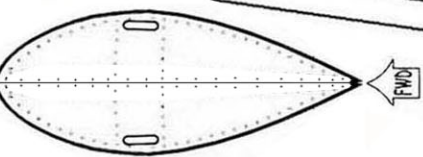
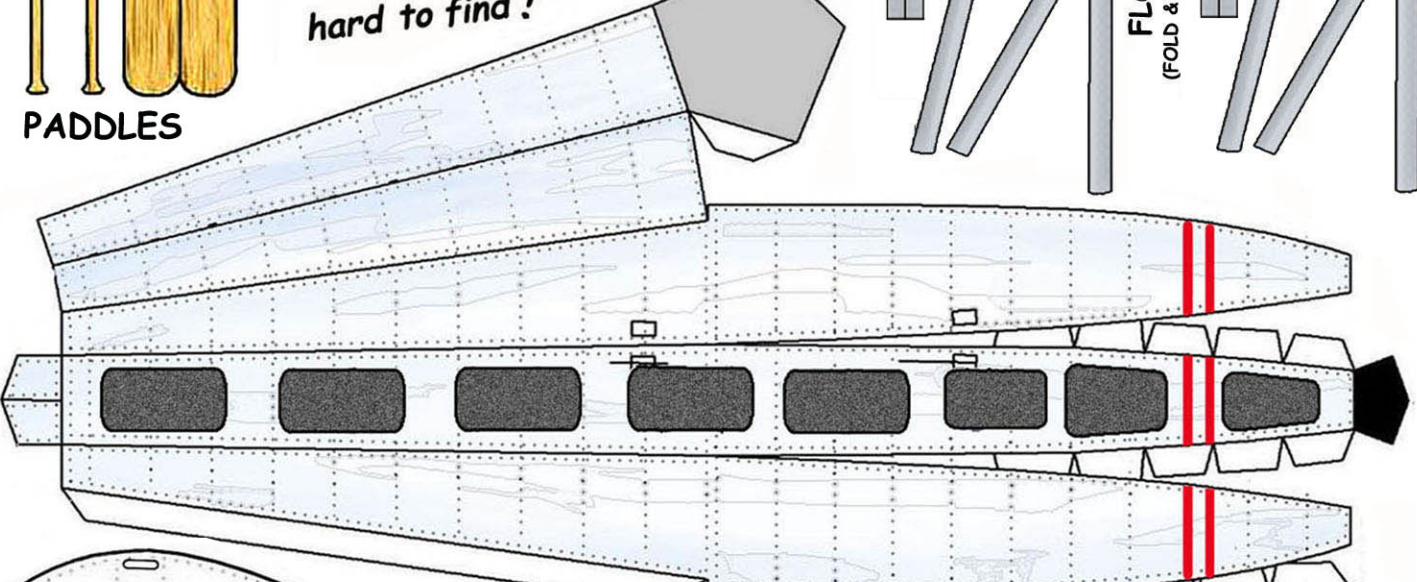
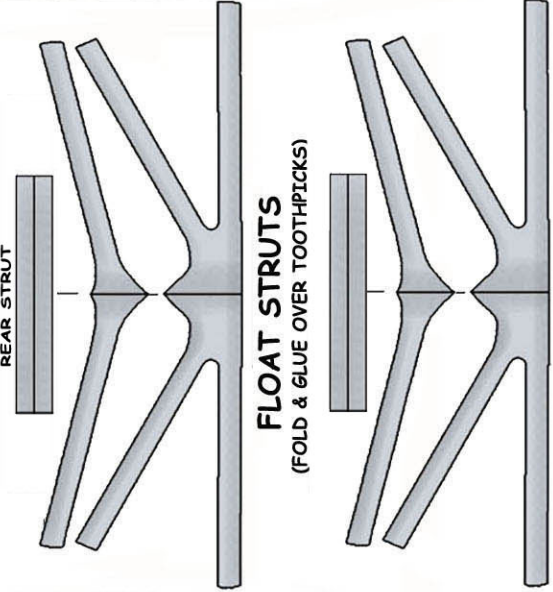


# SHEET-4

Water rudders pivot up in flight and drop down when taxiing in water.. The paddles (below) are to beat off the **Bass!**



The Beaver is such a tremendous floatplane that the majority of airworthy examples are on floats! It's the Beaver on wheels that's sometimes **hard to find!**



OPTIONAL DORSAL FIN  
(SEE INSTRUCTIONS)



INTERFLOAT STRUTS